



XIN JI DA PTE LTD

THE ONE-STOP SOLUTION PROVIDER

Connecting The World With Endless Possibilities

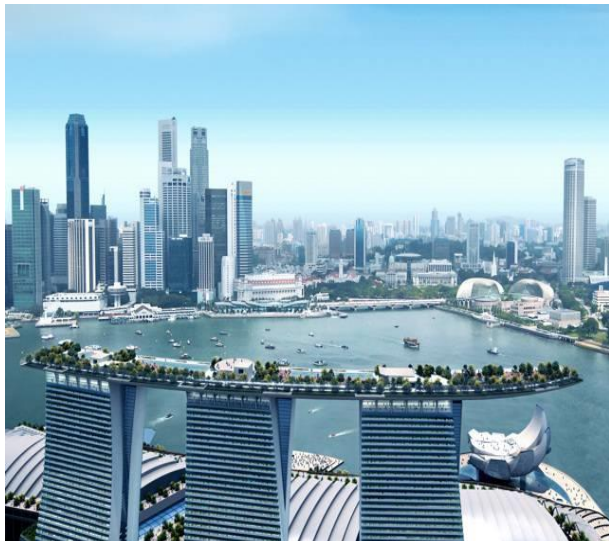


RUBBER INGREDIENTS | INDUSTRIAL CHEMICALS | WIRE & FABRIC REINFORCEMENT | LUBRICANTS ADDITIVES
INDUSTRIAL WHEELS & RIMS | AERIAL PLATFORM WHEELS | RUBBER TRACK & COMPONENTS | TYRE MACHINERY & MOULD

Address: 1 Pemimpin Drive, #12-02 Singapore 576151 Phone: +65 6223 3828 Fax: +65 6659 7789

Email: info@xinjida.com.sg Website: www.xinjida.com.sg





WHO WE ARE

Xin Ji Da has been established in Singapore since 1993. We first started off as a successful industrial chemical provider. Through years of continual dedication and perseverance, Xin Ji Da has transformed into 6 key business sectors:

- Rubber Ingredients
- Industrial Chemicals
- Wire and Fabric Reinforcement
- Industrial Wheels and Rims
- Rubber Track and Component
- Tyre Machinery and Mould

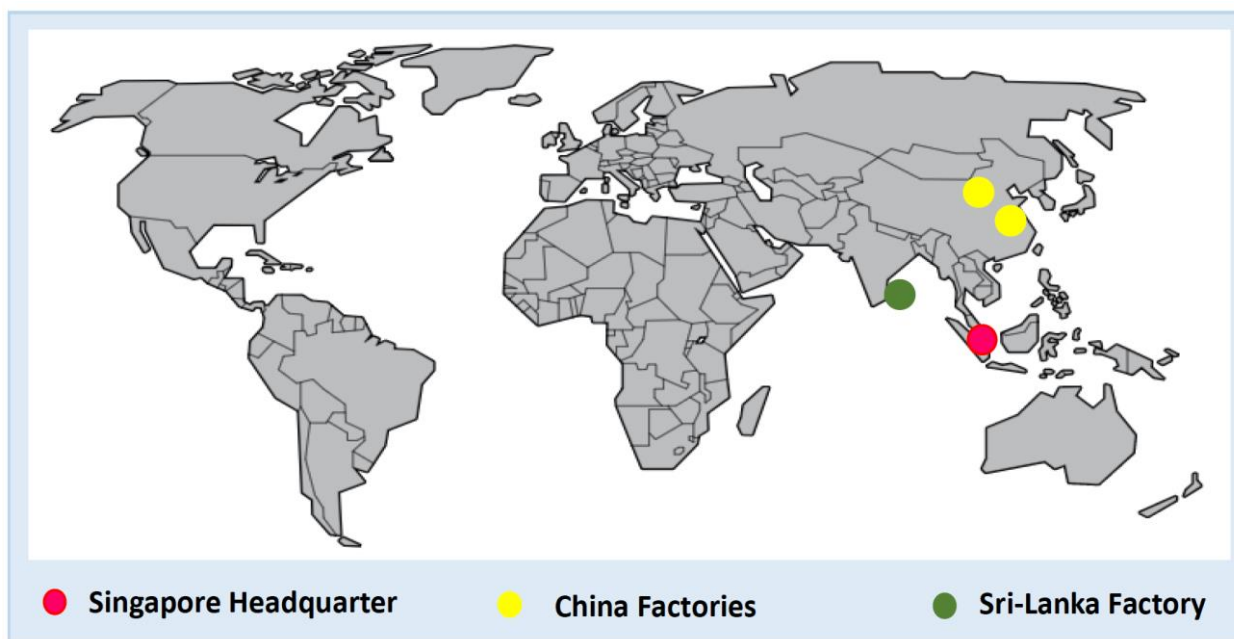
Xin Ji Da has decades of experience in chemical ingredients and industrial wheels and rims, supplying our products ranging from the world's largest diversified manufacturers to components suppliers. We understand the cyclical nature of the industry and the unique challenges it faces, and we consistently help our clients optimize their performance with our strong market knowledge and tailor-made solutions.

OUR MISSION

To provide customer-centric services while maintaining our reputation as a world-class manufacturer and supply chain manager.

OUR VISION

To be a leading global one-stop solution provider to connect the world of chemicals, tyre ingredients, industrial wheels & rims with endless possibilities.



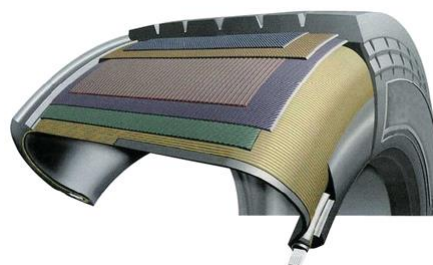
Connecting The World With Endless Possibilities

At Xin Ji Da, we have a comprehensive portfolio of tyre ingredients and an extensive global network to find the perfect solution for your business challenge. Our global multi-channel sourcing platform connects you to the best, ensures reliable delivery and simplifies your sourcing process. Our team of sales and engineering experts are equipped with strong market knowledge and expertise to bring you products and services of high standards of quality and consistency.

We are committed to helping you reach your goals by being your strategic supply chain manager. We serve as the leading one-stop solution provider to tyre manufacturers around the world with competitive pricing, efficiency and quality through our unparalleled supplier network and operations.



Rubber Chemicals



Wire & Nylon Reinforcement



Natural & Synthetic Rubber



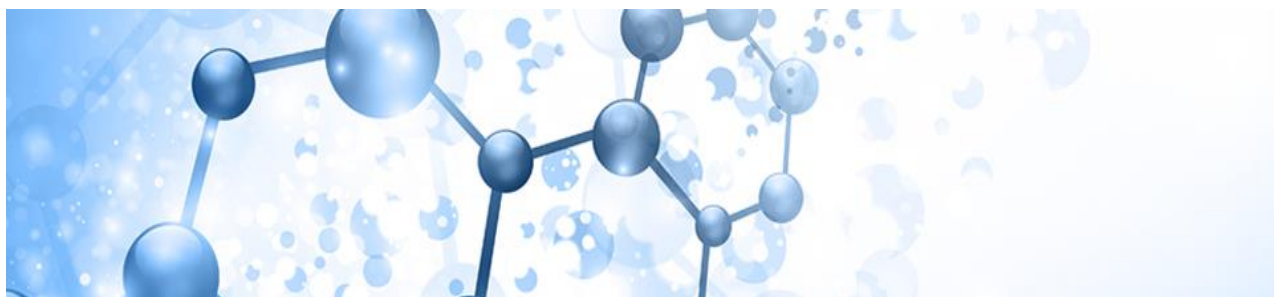
Flaps & Tubes





XINJIDA

Industrial Chemicals



MARKETS AND APPLICATIONS



Agriculture



Food Additive



Lubricants & Additives



Coating & Adhesive



Oil & Gas



Water Treatment

Ammonium Bifluoride	Chrome Oxide Green	Manganese Carbonate	Sodium Nitrate
Ammonium Acetate	Chromic Acid	Melamine	Sodium Nitrite
Ammonium Chloride	Citric Acid Anhydrous	Methanol	Sodium Silicofluoride
Ammonium Bicarbonate	Copper Sulphate Pentahydrate	Mono Ammonium Phosphate	sodium Sulfite
Ammonium Nitrate	Copper Oxide	Mono Calcium Phosphate	Sodium Thiosulphate Pentahydrate
Aluminium Chloride Anhydrous	Corn Starch	Mono Potassium Phosphate	Sodium Tripolyphosphate, Tech Grade, Powder
Aluminium Fluoride Anhydrous	Diammonium Phosphate	Mono Sodium Phosphate	Silica Gel Blue Bead
Aluminium Hydroxide	Dicalcium Phosphate	Mono Propylene Glyco	Soda Ash Dense
Aluminium Sulphate	Dicyandiamide	Oleic Acid	Soda Ash Light
Acetic Acid	EDTA 2NA-EDTA Disodium Salt	Oxalic Acid Dihydrate	Sorbic Acid
Activated Alumina	EDTA 4NA-EDTA Disodium Salt	Paraffin Wax	Sorbitol
Activated Carbon, Coal Based	Ethanol	Pine Tar Oil	Sulfuric Acid
Activated Carbon, wood Based	Ferric Chloride	Poly Aluminium Chloride	Talcum Power
Ascorbic Acid (Vitamin C)	Fumaric Acid	Phosphoric Acid	Tartaric Acid
Barium Carbonate	Furfuryl Alcohol	Potassium Citrate	Thiourea
Barium Chloride	Ferrous Sulphate Heptahydrate	Potassium Carbonate	Thiourea Dioxide
Barium Fluoride	Formic Acid	Potassium Hydroxide	Toluene
Barium Hydroxide	Glycerine	Potassium Nitrate	Tri Sodium Citrate BP93
Barium Nitrate	Hydroquinone	Potassium Permanganate	Tri Calcium Phosphate
Barium Sulfate	Iron Oxide	Sodium Bicarbonate	Trichloroisocyanuric Acid (Chlorine Tablets)
Benzoic Acid	Lithium Bromide	Sodium Benzoate BP Powder	Trisodium Phosphate
Borax	Lithopone	Sodium Carbonate	Xanthan Gum
Boric Acid	Magnesium Carbonate	Sodium Chloride	Zinc Acetate
Caustic Soda	Magnesium Chloride	Sodium Gluconate	Zin Ammonium Chloride Double Salt
Calcium Carbonate	Magnesium Hydroxide	Sodium Hexameta Phosphate	Zinc Benzoate
Calcium Citrate	Magnesium Oxide	Sodium Hydrosulfite	Zinc Carbonate
Calcium Cynanamide	Magnesium Phosphate	Sodium Metabisulfite	Zinc Chloride
Calcium Chloride	Magnesium Sulfate	Sodium Metasilica	Zinc Stearate
Calcium Sulfonate	Malic Acid	Sodium Molybdate	Zinc Sulphate



WWW.XINJIDA.COM.SG

The One-Stop Chemicals Provider

Your One-Stop Rubber Chemicals Provider

Rubber chemicals are essential raw materials in the production of tyres. They enhance the overall structural strength of a tyre and improve its performance by increasing heat and wear resistance.

As a one-stop rubber chemicals provider, we bring you a wide selection of rubber chemicals to meet your tyre manufacturing needs. We also provide value-added services such as formulation, packaging, just-in-time delivery and logistics services.



FILLERS

CARBON BLACK

PRECIPITATED SILICA

MICRO PEARL SILICA

ACCELERATORS | ANTI-SCORCHING AGENT

CBS

DCBS

DPG

MBT

MBS/MOR

MBTS

TBBS

TMTM

ZDBC

CTP PVI

ANTIOXIDANT | ANTIOZONANT

6PPD

IPPD

TMQ

BLE65

OTHERS

C5 RESIN

C90 RESIN

ZNO

TiO2

SI 69

STEARIC
ACID

INSOLUBLE
SULPHUR

BATCH-OFF
RELEASING AGENT





Your One-Stop Carbon Black Provider

At Xin Ji Da, we offer a wide range of carbon black grades which are used in rubber formulations to add tear strength, abrasion and aging resistance to the final rubber products. Our research and development team can also develop carbon black with specific characteristics to match your needs.

Different Grades of Carbon Black

N220

N234

N326

N330

N339

N375

N550

N660

N770

N762

N774



Your One-Stop Precipitated Silica Provider

At Xin Ji Da, we offer a wide range of precipitated silica which are used in rubber formulations to maximize tensile strength, compound stiffness, thermal resistance to the final rubber products. Our research and development team can also develop precipitated silica with specific characteristics to match your needs

Different Types of Precipitated Silica

Powder

Granular

Micro Pearl





Reliable and Consistent Tyre Solution

Bead wire is an essential framework material used in the production of tyres. It prevents tyres from changing shape due to air pressure or external forces, and safely locks the tyres onto the rims to prevent vibration while driving.

At Xin Ji Da, our reinforcement materials are carefully selected from our partner suppliers of more than 20 years. Strict measures are implemented to meet the highest safety and quality standards. We are committed in delivering reinforcement materials that are strong, durable and ready to perform.

Bead Wire Specifications

No.	Specification	Rupture stress ≥ N	Strength of extension ≥ N/mm ²	Yield ratio ≥ %	Elongation ≥ %	Reverse ≥ turns / 100d	Linearity ≤ mm/3m
1	0.78HT	912	1902	85	5	25	300
2	0.80HT	951	1902	85	5	25	300
3	0.89 NT/HT	1200/1375	1930/2210	85	5	25	300
4	0.93NT/HT	1294/1490	1930/2147	85	5	25	300
5	0.96 NT/HT	1410/1550	1950/2150	85	5	25	300
6	1.20 NT/HT	2100/2320	1860/2050	85	5	25	300
7	1.295/1.30 HT	2800	2050	85	5	20	300
8	1.42 NT/HT	2770/3250	1750/2050	85	5	20	300
9	1.55 NT/HT	3490/3870	1850/2050	85	5	20	300
10	1.65 NT	3850	1800	85	5	20	300
11	1.60 HT	4180	2080	85	5	20	300
12	1.80 NT/HT	4580/4982	1804/1960	85	5	20	300
13	1.83 HT	5150	1960	85	5	20	300
14	2.00 HT	5800	1850	85	5	20	300
15	2.10 NT/HT	5894/6414	1697/1853	85	5	20	300
16	2.20 HT	7450	1960	85	5	20	300





Reliable and Consistent Tyre Solution

Steel Cord is an essential framework material used in the production of tyres. Mainly used to construct the belt and carcass of a tyre, it stabilizes the tyre during long hours of extreme driving conditions.

At Xin Ji Da, our reinforcement materials are carefully selected from our partner suppliers of more than 20 years. Strict measures are implemented to meet the highest safety and quality standards. We are committed in delivering reinforcement materials that are strong, durable and ready to perform.

Different Types of Steel Cord

Passenger Car Radial (PCR)

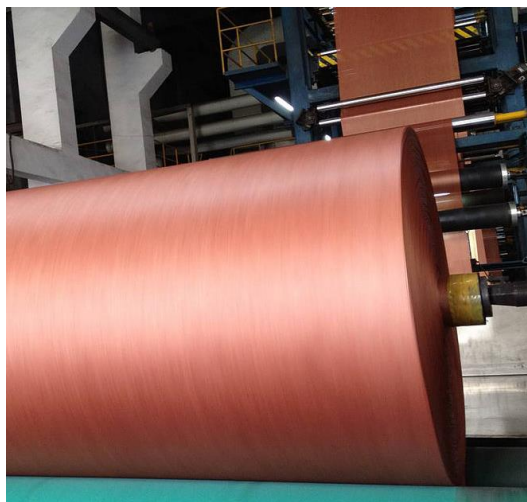
Off The Road (OTR)

Truck & Bus Radial (TBR)

Steel Cord Specifications

No.	Structure of Steel Wire	Lay Length $\pm 5\%$	Direction of Twist	Wire Diameter $\pm 5\%$	Minimum Breaking Force N \geq	Linear Density g/m $\pm 5\%$
1	7 \times 7 \times 0.22 HT(W)	12.5/20(/5)	S/Z(/S)	1.98(2.22)	5130	15.10/15.20
2	7 \times 7 \times 0.25 HT(W)	12.5/20/5	S/Z(/S)	2.28(2.49)	6350	19.34/19.8
3	7 \times (3+9 \times 0.22) NT/HT	6.3/12.5/22	ZZ/SS/Z	2.86	7600/8400	26.10
4	7 \times (3+9 \times 0.245) NT/HT	6.3/12.5/28	ZZ/SS/Z	3.10	8100/9000	32.00
5	7 \times (3+9 \times 0.30) NT/HT	9/18/32	ZZ/SS/Z	3.65	13600/14800	46.65
6	7 \times (3+9 \times 0.22)+0.15 NT/HT	6.3/12.5/22/5	ZZ/SS/Z/S	3.12	7600/8400	26.60
7	7 \times (3+9 \times 0.245)+0.20 NT/HT	6.3/12.5/28/5	ZZ/SS/Z/S	3.30	8100/9000	33.07
8	7 \times (3+9 \times 0.30)+0.20 NT/HT	12.5/18/32/5	ZZ/SS/Z/S	3.90	13800/15200	49.27
9	7 \times (3+9+15 \times 0.175) NT/HT	5/10/16/26	ZZZ/ZZZ/S	3.25	10200/11470	37.00
10	7 \times (3+9+15 \times 0.175)+0.20 NT/HT	5/10/16/38/5	ZZZ/ZZZ/S/Z (SSS/ZZZ/S/Z)	3.47	10200/11470	37.50
11	7 \times (3+9+15 \times 0.20)+0.20 NT/HT	5.5/11.5/16/44/5	SSS/ZZZ/S/Z	4.05	14700/15970	48.93
12	7 \times (3+9+15 \times 0.22)+0.20 NT/HT	6.3/12.5/18/48/5	SSS/ZZZ/Z/S (SSS/ZZZ/S/Z)	4.35	16000/18000	59.16
13	7 \times (3+9+15 \times 0.245)+0.245 NT/HT	6.3/12.5/18/55/5	ZZZ/ZZZ/S/Z	4.84	21200/22300	73.90





Reliable and Consistent Tyre Solution

Tyre Cord is an essential framework material used in the production of tyres. Due to its excellent adhesive force over rubber, tyre cord fabrics are used to manufacture tyres containing many plies.

At Xin Ji Da, our reinforcement materials are carefully selected from our partner suppliers of more than 20 years. Strict measures are implemented to meet the highest safety and quality standards. We are committed in delivering reinforcement materials that are strong, durable and ready to perform.

Nylon 66 Dipped Tyre Cord Fabric Specifications

Parameter	Units	Specification			
		840D/2	1260D/2	1680D/2	1890D/2
Average Breaking Strength	Kg	Min 137.2	Min 215.6	Min 284.2	Min 313.6
Elongation at N	%	7.9 - 9.1 (44.1N)	7.9 - 9.1 (66.6N)	8.1 - 9.3 (88.2N)	8.4 - 9.6 (100N)
Adhesion By H-Test	N/cm	Min 107.8	Min 137.2	Min 156.8	Min 156.8
Cord Gauge	mm	0.48 - 0.58	0.60 - 0.70	0.69 - 0.79	0.73 - 0.83
Twist	T/10cm	44.5 - 47.5	35.5 - 38.5	31.5 - 34.5	30.0 - 34.0
Dip Pick Up	%	4.0 - 6.0	4.0 - 6.0	4.0 - 6.0	3.5 - 5.5
Elongation at Break	%	18.5 - 22.5	19.5 - 23.5	20.0 - 24.0	20.0 - 24.0
Moisture	%	Max 1.0	Max 1.0	Max 1.0	Max 1.0
Heat Shrinkage	%	Max 5.0	Max 5.0	Max 5.0	Max 5.5

Nylon 6 Dipped Chafer Fabric Specifications

Parameter	Units	Specification(420 D/1)	Specification(840 D/1)
Breaking Strength	N/end	Min. 20	Min. 69
Adhesion by H-test	Kg/Inch	Min. 20	Min. 20
Thickness	mm	0.45 - 0.55	0.45 - 0.59
Dip Pick Up	%	1.5 - 4.5	8.0 - 14.0
EPI - Warp	%	20 - 30	20 - 30
EPI - Weft	%	25 - 35	25 - 35
Moisture	%	Max 1.5	Max 5.0



Nylon 6 Dipped Tyre Cord Fabric Specifications

Parameter	Units	Specification								
		840 D/1	840 D/2	1050D/1	1260D/1	1260D/2	1260D/3	1680D/1	1680D/2	1890D/2
Average Breaking Strength	N/end	67	132.8	87	98	205.8	303.8	127	270	303.8
Elongation at N	%	6.5 - 8.5 (22.6N)	7.0 - 9.0 (44.1N)	6.0 - 8.0 (27.5N)	6.0 - 8.0 (33.3N)	7.3 - 8.7 (66.6N)	8.5 - 10.5 (100N)	7.0 - 9.0 (44.1N)	7.0 - 9.0 (88.2N)	8.5 - 10.5 (100N)
Adhesion By H-Test	N/cm	49	98	58	64	117.6	166.6	78	137.2	166.6
Dip Pick Up	%	3.0 - 5.4	3.5 - 6.5	3.0 - 5.4	3.0 - 5.4	3.5 - 6.5	3.5 - 6.5	3.0 - 5.4	3.5 - 6.5	3.5 - 6.5
Elongation at Break	%	18 - 22	20 - 24	18 - 22	18 - 22	20 - 28	20 - 28	18 - 22	20 - 28	20 - 28
Cord Gauge	mm	0.29 - 0.35	0.51 - 0.59	0.36 - 0.42	0.40 - 0.46	0.61 - 0.69	0.74 - 0.82	0.47 - 0.53	0.71 - 0.79	0.74 - 0.82
Z-Twist	T/10cm	26.5 - 29.5	44.5 - 47.5	17 - 19	17 - 19	35.5 - 38.5	30.5 - 33.5	15 - 17	31.5 - 34.5	30.5 - 33.5
S-Twist	T/10cm	26.5 - 29.5	44.5 - 47.5	17 - 19	17 - 19	35.5 - 38.5	30.5 - 33.5	15 - 17	31.5 - 34.5	30.5 - 33.5
Shrinkage (In Hot Air 160°C x 2min)	%	Max 4	Max 6.5	Max 4	Max 4	Max 6.5	Max 6.5	Max 4	Max 6.5	Max 6.5
Moisture	%	Max 1	Max 1	Max 1	Max 1	Max 1	Max 1	Max 1	Max 1	Max 1

Polyester Dipped Tyre Cord Fabric Specifications

Parameter	Units	Specification							
		1000D/2	1000D/3	1300D/2	1300D/3	1500D/2	1500D/3	2000D/2	2000D/3
Average Breaking Strength	N	Min 137	Min 202	Min 180	Min 260	Min 202	Min 305	Min 270	Min 400
Elongation at N	%	3.5 - 5.5 (44.1N)	3.5 - 5.5 (66.6N)	3.5 - 5.5 (58.0N)	3.5 - 5.5 (88.2N)	3.5 - 5.5 (66.6N)	4 - 6 (100N)	3.5 - 5.5 (88.2N)	4.5 - 6.5 (133N)
Elongation at Break	%	Min 14	Min 14	Min 14	Min 14	Min 14	Min 15	Min 14	Min 16
Adhesion By H-Test (at 138°C in 50mins)	N/5mm	Min 125	Min 140	Min 130	Min 170	Min 140	Min 185	Min 170	Min 190
Dip Pick Up	%	2.5 - 4.5	2.0 - 4.0	2.0 - 4.0	2.0 - 4.0	2.0 - 4.0	2.0 - 4.0	2.0 - 4.0	2.0 - 4.0
Cord Gauge	mm	0.53 - 0.59	0.63 - 0.69	0.58 - 0.64	0.72 - 0.78	0.63 - 0.69	0.78 - 0.84	0.72 - 0.78	0.87 - 0.93
S-Twist	T/m	435 - 465	355 - 385	475 - 405	315 - 345	355 - 385	285 - 315	315 - 345	245 - 275
Shrinkage (in Hot air 177°C x 2min)	%	Max 2.0	Max 2.0	Max 2.0	Max 2.0	Max 2.0	Max 2.0	Max 2.0	Max 2.0
Moisture	%	Max 1	Max 1	Max 1	Max 1	Max 1	Max 1	Max 1	Max 1
Width	%	142 - 148	142 - 148	142 - 148	142 - 148	142 - 148	142 - 148	142 - 148	138 - 142





Your One-Stop Lubricant Additives Provider

Lubricant Additives are essential additives that are added to lubricating oils to change the quality and performance of lubricating oil products to a certain extent.

At Xin Ji Da, we offers a broad range of products for use in formulating high performance industrial and automotive lubricants, greases, metalworking fluids, and rust preventives.

Single Agents Components

Products	Categories		Grades
Detergents	Calcium Sulfonate	Neutral Salt	TBN: 5 - 35
		High Alkali Value	TBN: 300
		Ultrahigh Alkali Value	TBN: 400
		Calcium Sulfonate for Lubricating Grease	TBN: 400
	Magnesium Sulfonate	-	TBN: 400
	Alkyl Calcium Sulphide	T115A	TBN: 100 -150
		T115B	TBN: 250 - 300
	Calcium Salicylate	Medium Alkali Value	TBN: 200 - 230
		High Alkali Value	TBN: 340 - 375
ZDDP (Antioxidant and Anticorrosive Agents)	Different R-based Structures		202 - 209
High Temperature Antioxidants	Phenol Ester Antioxidant		508
	High Temperature Amine Antioxidants		557
			558
Ashless Dispersion Agents	Low Molecular Weight Ashless Agent		151
	Low Molecular Double Ash Remover		154
	High Molecular Ash-free Agent		161

Compounding Agents

Products	Categories	Applications
Compounding Agents	Internal Combustion Engine Oil	Diesel Engine Oil
		Gasoline Engine Oil
	Industrial Oil	Gear Oil
		ATF Gearbox Oil
		Metalworking Fluid Complex
		Marine Cylinder Oil
	Ship Oil	Marine Systems





XIN JI DA PTE LTD

THE ONE-STOP SOLUTION PROVIDER

RUBBER INGREDIENTS | INDUSTRIAL CHEMICALS | WIRE & FABRIC REINFORCEMENT | LUBRICANTS ADDITIVES
INDUSTRIAL WHEELS & RIMS | AERIAL PLATFORM WHEELS | RUBBER TRACK & COMPONENTS | TYRE MACHINERY & MOULD



Address: 1 Pemimpin Drive, #12-02 Singapore 576151

Phone: +65 6223 3828 Fax: +65 6659 7789

Email: info@xinjida.com.sg Website: www.xinjida.com.sg